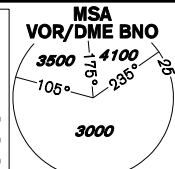


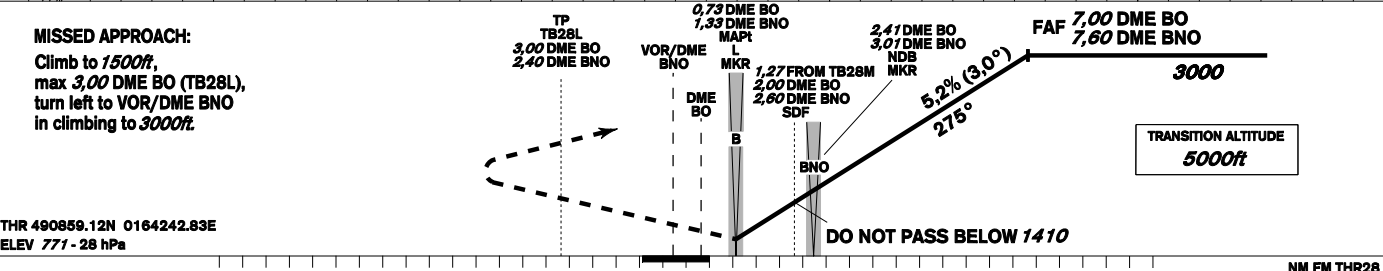
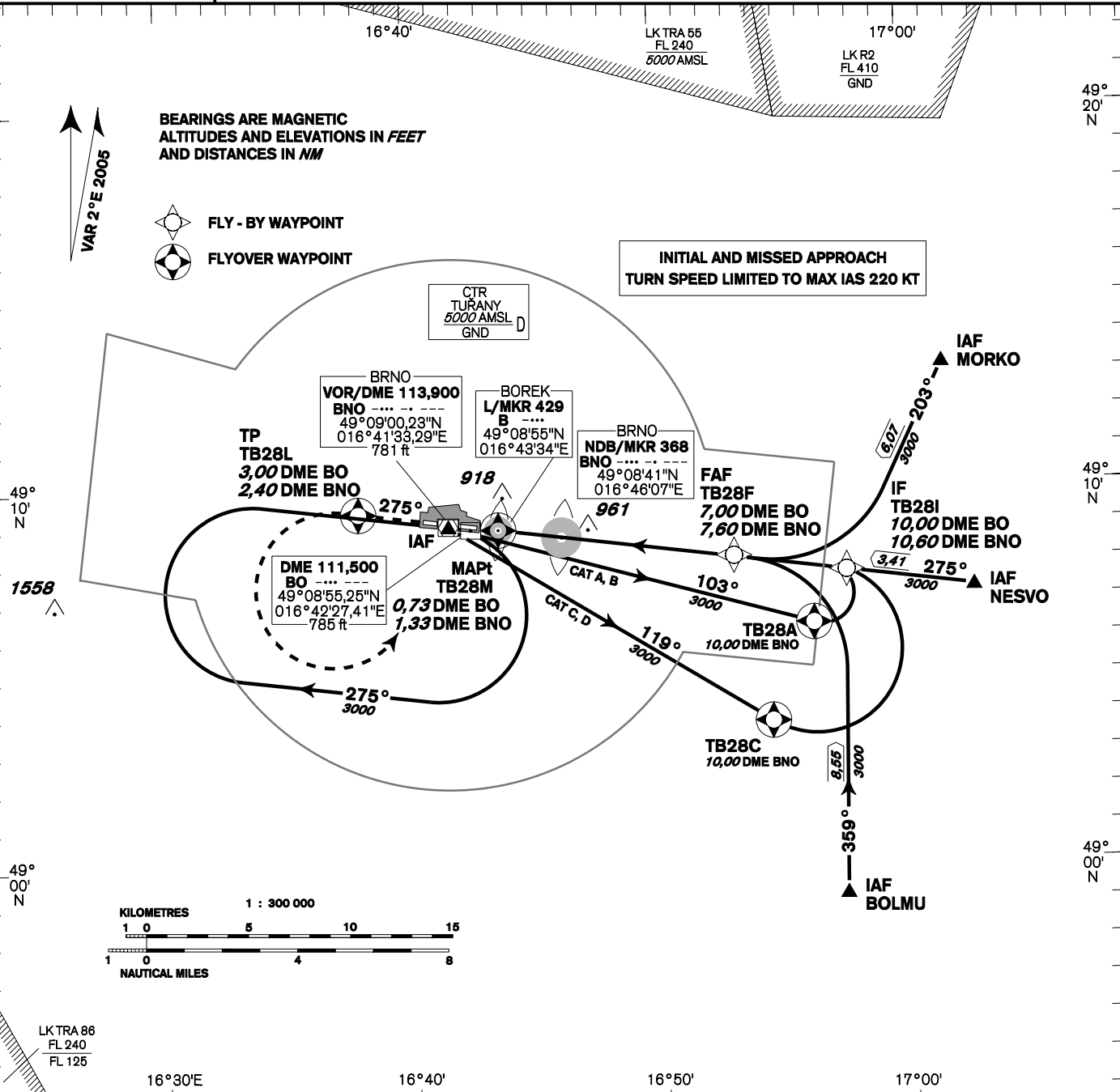
# INSTRUMENT APPROACH CHART - ICAO

AERODROME ELEV 778 - 28 hPa  
THR RWY 28 ELEV 771 - 28 hPa  
OCH RELATED TO THR RWY 28

TUŘANY/TOWER 119,600  
125,425  
121,500  
BRNO  
APPROACH/RADAR 120,550  
119,900  
121,500



**BRNO/Tuřany  
NDB - DME(GPS)  
RWY 28**



THR 490859.12N 0164242.83E  
ELEV 771 - 28 hPa

change: LKR 1.4 withdrawn

OCA/OCH	A	B	C	D	
Straight-in Approach	ft	1110/340			
	m	339/104			
SDF not received	ft	1410/640			
	m	430/196			
Circling	ft	1220 L/-	1360 L/-	1380 L/-	1680 L/-
	m	370 L/-	412 L/-	420 L/-	510 L/-

DME BO NM	7	6	5	4	3	2	1
DME BNO NM	7,60	6,60	5,60	4,60	3,60	2,60	1,60
DIST THR NM	6,84	5,84	4,84	3,84	2,84	1,84	0,84
ALTITUDES ft	3030	2700	2380	2050	1730	1400	1080
FAF - MAPt 6,27 NM	kt	80	100	120	140	160	180
	min:sec	4:42	3:46	3:08	2:41	2:21	2:05
Rate of descent	ft/min	430	530	640	750	850	960

Timing is not authorized for defining the MAPt.

Seznam traťových bodů / Way point list		
BOLMU	48 59 08,83 N	016 57 20,84 E
MORKO	49 13 08,82 N	017 01 34,81 E
NESVO	49 07 13,85 N	017 02 42,08 E
VOR/DME BNO	49 09 00,23 N	016 41 33,29 E
L B	49 08 54,65 N	016 43 34,23 E
TB28A	49 06 19,33 N	016 56 13,08 E
TB28C	49 03 44,51 N	016 54 29,29 E
TB28I	49 07 42,25 N	016 57 34,32 E
TB28F	49 08 07,58 N	016 53 02,77 E
TB28M	49 08 54,65 N	016 43 34,23 E
TB28L	49 09 22,88 N	016 37 56,48 E

Posloupnost traťových bodů / Way point sequence Od IAF BOLMU/From IAF BOLMU		
BOLMU	IAWP	fly-by
TB28I	IWP	fly-by
TB28F	FAWP	fly-by
L B	MAWP	fly-over
TB28L		fly-over
VOR/DME BNO	MAHWP	fly-by

Posloupnost traťových bodů / Way point sequence Od IAF MORKO/From IAF MORKO		
MORKO	IAWP	fly-by
TB28I	IWP	fly-by
TB28F	FAWP	fly-by
L B	MAWP	fly-over
TB28L		fly-over
VOR/DME BNO	MAHWP	fly-by

Posloupnost traťových bodů / Way point sequence Od IAF NESVO/From IAF NESVO		
NESVO	IAWP	fly-by
TB28I	IWP	fly-by
TB28F	FAWP	fly-by
L B	MAWP	fly-over
TB28L		fly-over
VOR/DME BNO	MAHWP	fly-by

Posloupnost traťových bodů / Way point sequence Od IAF BNO/From IAF BNO		
VOR/DME BNO	IAWP	fly-by
Cat. A,B: TB28A Cat. C,D: TB28C		fly-over
TB28F	FAWP	fly-by
L B	MAWP	fly-over
TB28L		fly-over
VOR/DME BNO	MAHWP	fly-by

